



**DATASHEET**

Issue 1.0



Multifunction Meters

Transducers & Isolators

Temperature Controllers

Converters & Recorders

Digital Panel Meters

Current Transformers

Analogue Panel Meters

Shunts

Digital Multimeters

Clamp Meters

Insulation Testers

## OMEGA 10 SPLIT CORE CURRENT TRANSFORMER SERIES

**SUBJECT TO CHANGE WITHOUT NOTICE**

This manual superseded all previous versions – please keep for future reference



**Omega 10 Series** is a range of split core current transformers that offers a cost effective and efficient method by which the current can be measured without the need to break the conductor, thereby reducing installation and commissioning time.

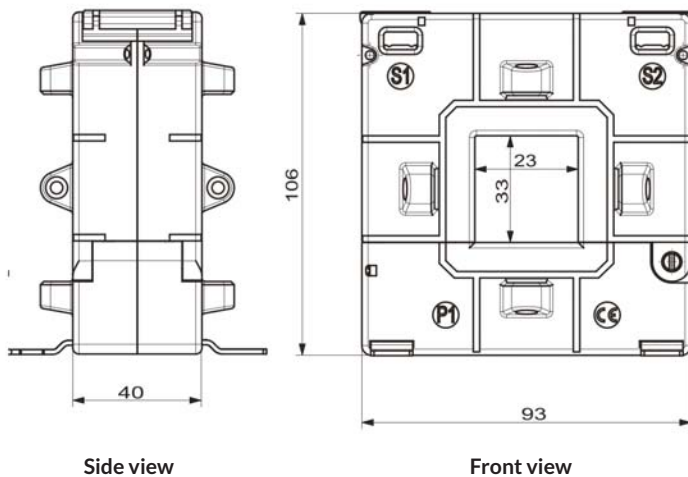
### Specifications

• System voltage	720V (0.72kV) maximum
• Test voltage	3kV for 1 minute
• System frequency	50 or 60 Hz
• Insulation class	E
• Overload withstand	1.2 times rated current continuously
• Short circuit thermal	100 x rated primary for 1 second
• Operating temperature	20°C to 70°C
• Relative humidity	0-90% (non condensing)
• Compliant with	IEC 60044-1, Bs7626
• Accuracy	Class 3, 1 & 0.5
• Rated dynamic current	= 2.55 x 1ht
• Enclosure	Flame retardant grade classified UL 94V-O

### Applications

- Switchgear
- Distribution system
- Generator sets
- Control panels
- Overload protection
- Control devices

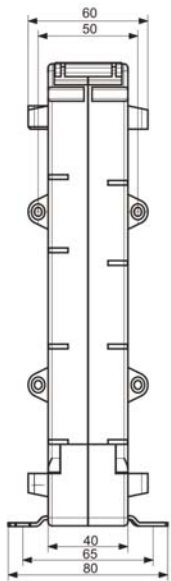
### Omega 10A 93/30 SC (40)



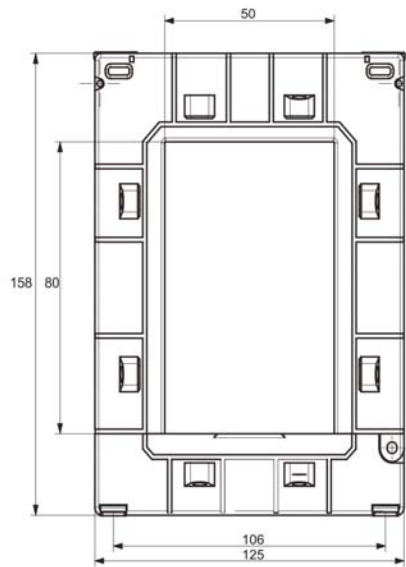
ALL DIMENSIONS ARE IN MM.

Primary Current	VA			OD/ID (Axial)
	Class 0.5	Class 1	Class 3	
100	-	1.5VA	3.5VA	93 / 30 (40)
150	-	1.75VA	3.75VA	93 / 30 (40)
200	-	2.5VA	5VA	93 / 30 (40)
250	-	3.75VA	6.25VA	93 / 30 (40)
300	2.5VA	5VA	6.25VA	93 / 30 (40)
400	3.75VA	6.25VA	10VA	93 / 30 (40)

**Omega 10B 125/50 SC (40)**



**Side view**

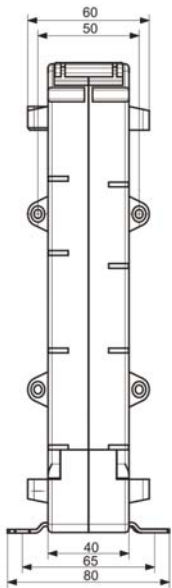
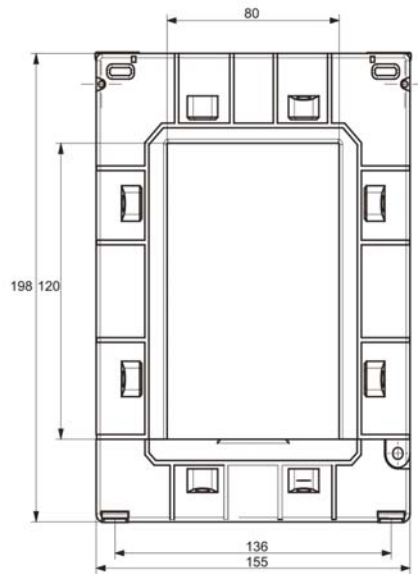
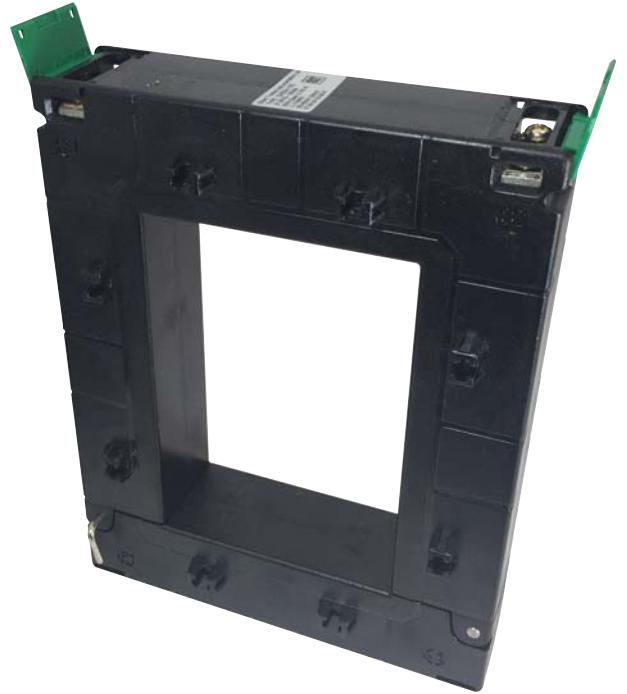


**Front view**



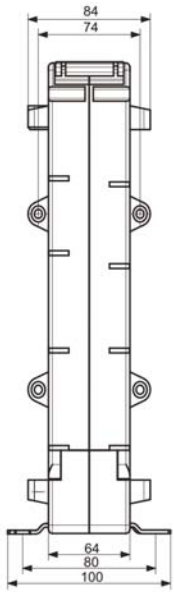
ALL DIMENSIONS ARE IN MM.

Primary Current	VA		OD/ID (Axial)
	Class 0.5	Class 1	
250	1VA	2.5VA	125 / 50 (40)
300	2.5VA	3.75VA	125 / 50 (40)
400	2.5VA	3.75VA	125 / 50 (40)
500	3.75VA	5VA	125 / 50 (40)
600	5VA	7.5VA	125 / 50 (40)
750	7.5VA	10VA	125 / 50 (40)
800	7.5VA	10VA	125 / 50 (40)
1000	10VA	15VA	125 / 50 (40)
1200	10VA	15VA	125 / 50 (40)
1250	10VA	15VA	125 / 50 (40)
1500	10VA	15VA	125 / 50 (40)
1600	10VA	15VA	125 / 50 (40)

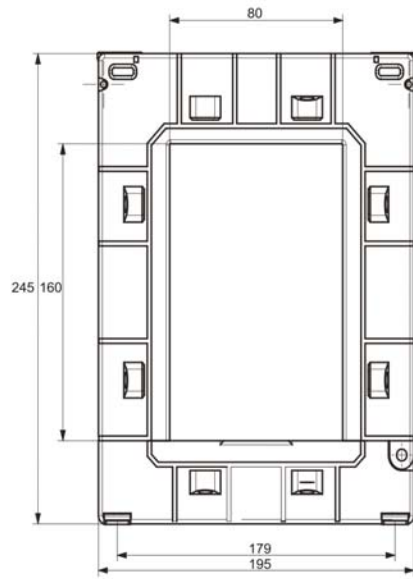
**Omega 10C 155/80 SC (40)**

**Side view**

**Front view**


ALL DIMENSIONS ARE IN MM.

Primary Current	VA		OD/ID (Axial)
	Class 0.5	Class 1	
250	1VA	2.5VA	155 / 80 (40)
300	2.5VA	3.75VA	155 / 80 (40)
400	2.5VA	3.75VA	155 / 80 (40)
500	3.75VA	5VA	155 / 80 (40)
600	5VA	7.5VA	155 / 80 (40)
750	7.5VA	10VA	155 / 80 (40)
800	7.5VA	10VA	155 / 80 (40)
1000	10VA	15VA	155 / 80 (40)
1200	15VA	30VA	155 / 80 (40)
1250	15VA	30VA	155 / 80 (40)
1500	20VA	45VA	155 / 80 (40)
1600	20VA	45VA	155 / 80 (40)
2000	20VA	45VA	155 / 80 (40)
2500	25VA	45VA	155 / 80 (40)
3000	30VA	45VA	155 / 80 (40)

**Omega 10D 195/80 SC (40)**


Side view



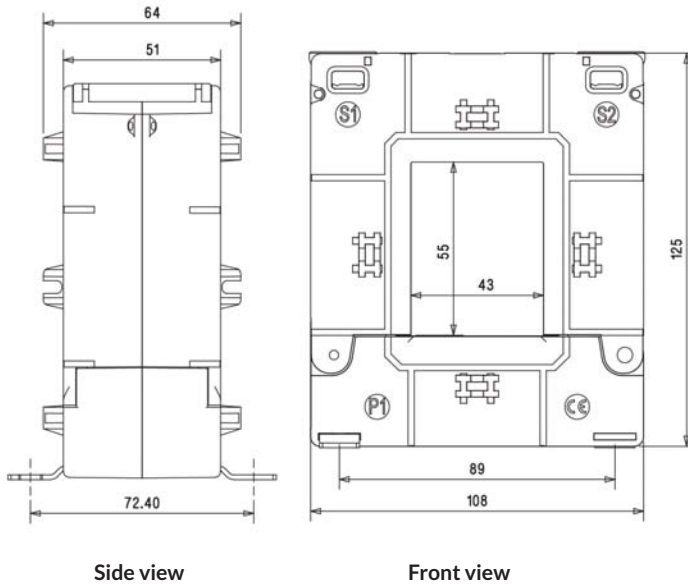
Front view



ALL DIMENSIONS ARE IN MM.

Primary Current	VA		OD/ID (Axial)
	Class 0.5	Class 1	
500	1.25VA	5VA	195 / 80 (64)
600	1.25VA	5VA	195 / 80 (64)
750	5VA	10VA	195 / 80 (64)
800	7.5VA	10VA	195 / 80 (64)
1000	10VA	20VA	195 / 80 (64)
1200	15VA	20VA	195 / 80 (64)
1250	15VA	20VA	195 / 80 (64)
1500	20VA	30VA	195 / 80 (64)
1600	20VA	30VA	195 / 80 (64)
2000	25VA	30VA	195 / 80 (64)
2500	25VA	30VA	195 / 80 (64)
3000	30VA	45VA	195 / 80 (64)
4000	30VA	45VA	195 / 80 (64)
5000	30VA	45VA	195 / 80 (64)

**Omega 10E 105/50 SC (50)**



ALL DIMENSIONS ARE IN MM.

Primary Current	VA		OD/ID (Axial)
	Class 0.5	Class 1	
100	-	1.5VA	105 / 50 (50)
125	-	1.5VA	105 / 50 (50)
150	-	1.75VA	105 / 50 (50)
200	1.5VA	3.75VA	105 / 50 (50)
250	2.5VA	5VA	105 / 50 (50)
300	2.5VA	5VA	105 / 50 (50)
400	5VA	7.5VA	105 / 50 (50)
500	5VA	7.5VA	105 / 50 (50)
600	6.25VA	10VA	105 / 50 (50)
750	7.5VA	12.5VA	105 / 50 (50)
800	7.5VA	12.5VA	105 / 50 (50)

**Contact**



**Sifam Tinsley Instrumentation Ltd**

1 Warner Drive  
Springwood Industrial Estate  
Braintree, Essex  
CM7 2YW

Tel: 01376 335271  
E-mail: sales@sifamtinsley.com

[www.sifamtinsley.co.uk](http://www.sifamtinsley.co.uk)